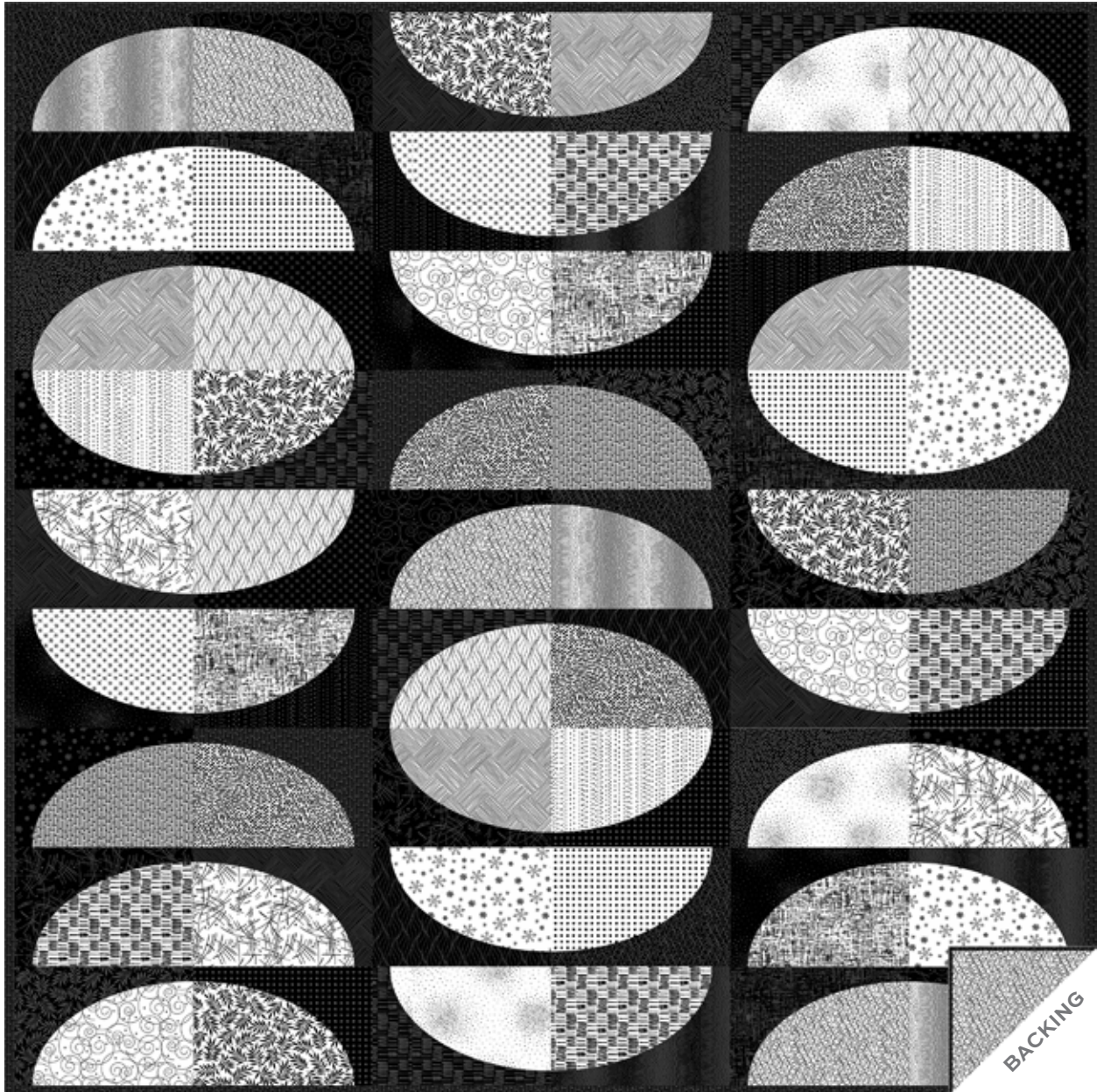


Century Black on Black and Black on White

ANDOVER FABRICS

a
100
years



Atmosphere Quilt designed by: **Janet Houts** • Quilt Size: **54" x 54"**

Skill Level: **Intermediate** • andoverfabrics.com

andover

•
•
• makower.uk
•

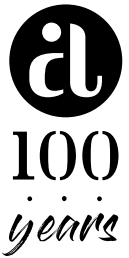
Free Pattern Download Available

1384 Broadway New York, NY 10018
Tel. (800) 223-5678 • andoverfabrics.com

9/15/20

Atmosphere Quilt

Introducing Andover Fabrics new collection: **Century Black on Black & Century Black on White**
by Andover Fabrics • Quilt designed by Janet Houts



Quilt finishes 54" x 54"
27 Blocks: 6" x 18"

Graphic black and white prints make this scrappy quilt, just the right size for a bold wall quilt or lap throw. The easy curved patches will stitch together quickly.

Fabric Requirements

	Yardage	Fabric
15 Blacks blocks fat $\frac{1}{8}$ yard ea.		
9667 K 9668 K 9671 K 9672 K 9673 K		
9676 K 9677 K 9680 K 9682 K 9683 K		
9684 K 9688 K 9691 K 9692 K 9695 K		
15 Whites blocks fat $\frac{1}{4}$ yard ea.		
9667 L 9668 L 9671 L 9672 L 9673 L		
9677 L 9680 L 9682 L 9683 L 9684 L		
9688 L 9691 L 9692 L 9694 L 9695 L		
Binding $\frac{1}{2}$ yard		9694 K
Backing $3\frac{1}{2}$ yards		9676 L

Cutting Directions

Note: Read assembly directions before cutting patches. All measurements are cut sizes and include $\frac{1}{4}$ " seam allowances. A fat $\frac{1}{8}$ is a 9" x 20"-22" cut of fabric. A fat $\frac{1}{4}$ is an 18" x 20"-22" cut. WOF designates the width of fabric from selvedge to selvedge (approximately 42" wide).

15 Blacks From each:
Cut (3-4) Template 2
Cut (3-4) Template 2 Reversed
(27 total Template 2 & 27 total Template 2 Rev.)

15 Whites From each:
Cut (3-4) Template 1
Cut (3-4) Template 1 Reversed
(27 total Template 1 & 27 total Template 1 Rev.)

Binding

Cut (6) strips $2\frac{1}{2}$ " x WOF for binding

Backing

Cut (2) panels 31" x 62", pieced to fit quilt top with overlap on all sides

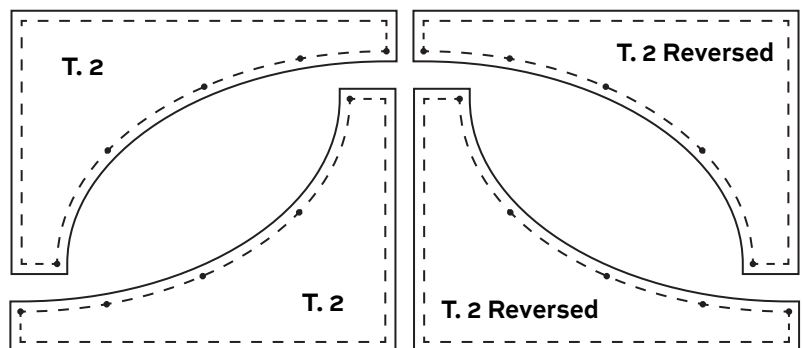
Making the Quilt

1. Make acrylic patterns of Template 1 and Template 2. Use an ice pick to punch holes at the dots. To conserve fabric, refer to the cutting diagram to cut Template 2 and Template 2 Reversed patches. Mark the dots on the wrong side of all patches.
2. Each block requires 1 of each patch. Combine the light and dark patches as you wish, or follow the quilt photograph for combinations. Sew a Template 2 fabric patch to a Template 1 patch, matching dots. Hint: Position Template 2 patch on top and pin in multiple places along the curve. Join a Template 2 Reversed patch to a Template 1 Reversed patch. Press seam allowances away from the Template 1 patches. Join the 2 halves to make a block. Make 27 blocks.
3. Referring to the Quilt Diagram, arrange 3 blocks to make each horizontal row. Arrange 9 rows, rotating the blocks as shown. Once you are satisfied with the arrangement, join the blocks into rows, and then join the rows.

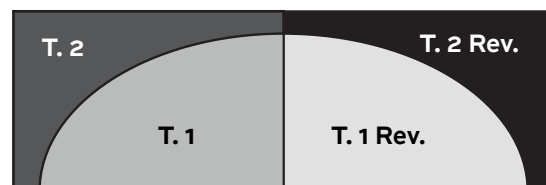
Finishing the Quilt

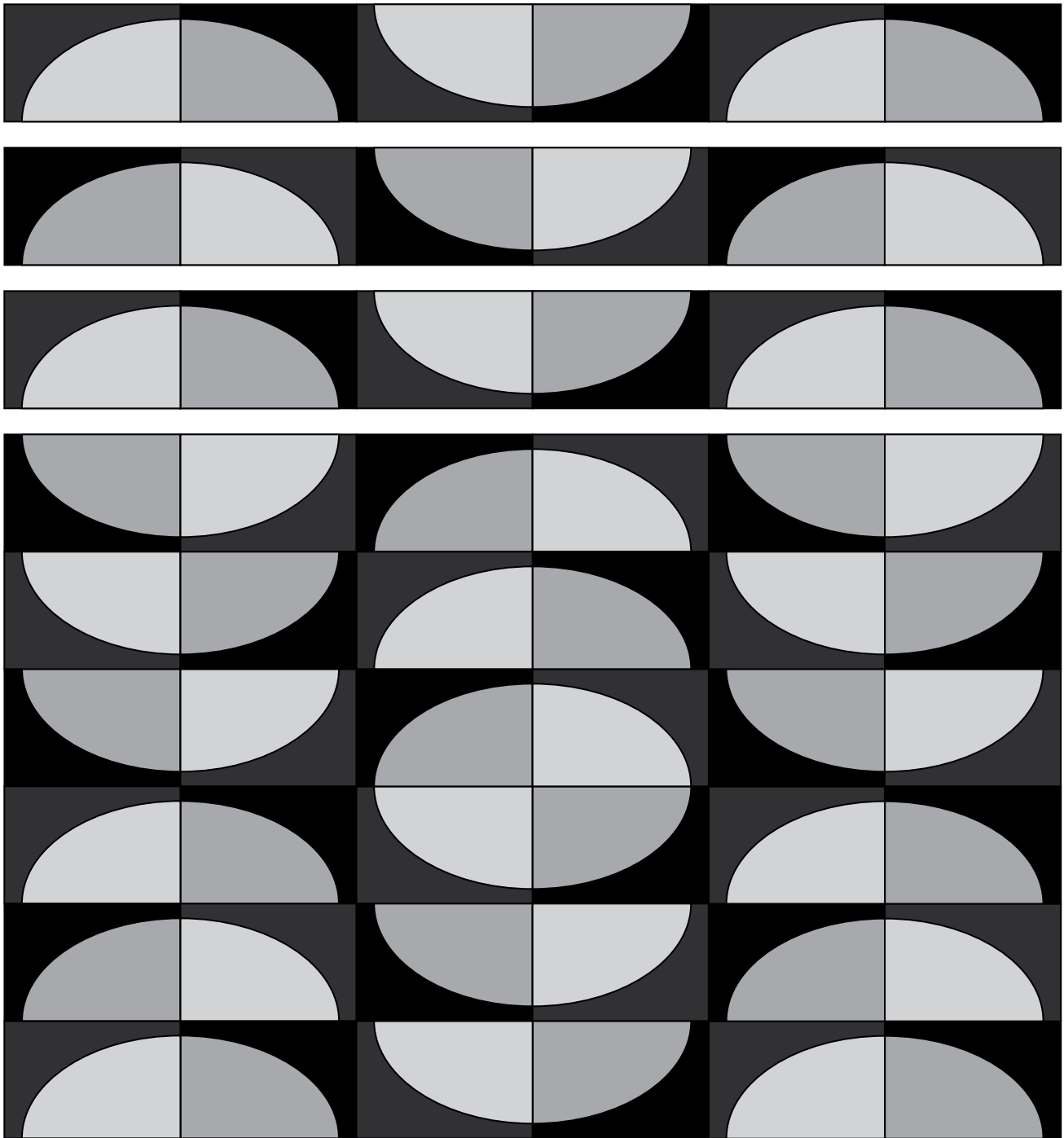
4. Layer the quilt with batting and backing and baste. Quilt in the ditch around block patches, or quilt an overall pattern across the quilt. Bind to finish the quilt.

Cutting



Block





Quilt Diagram

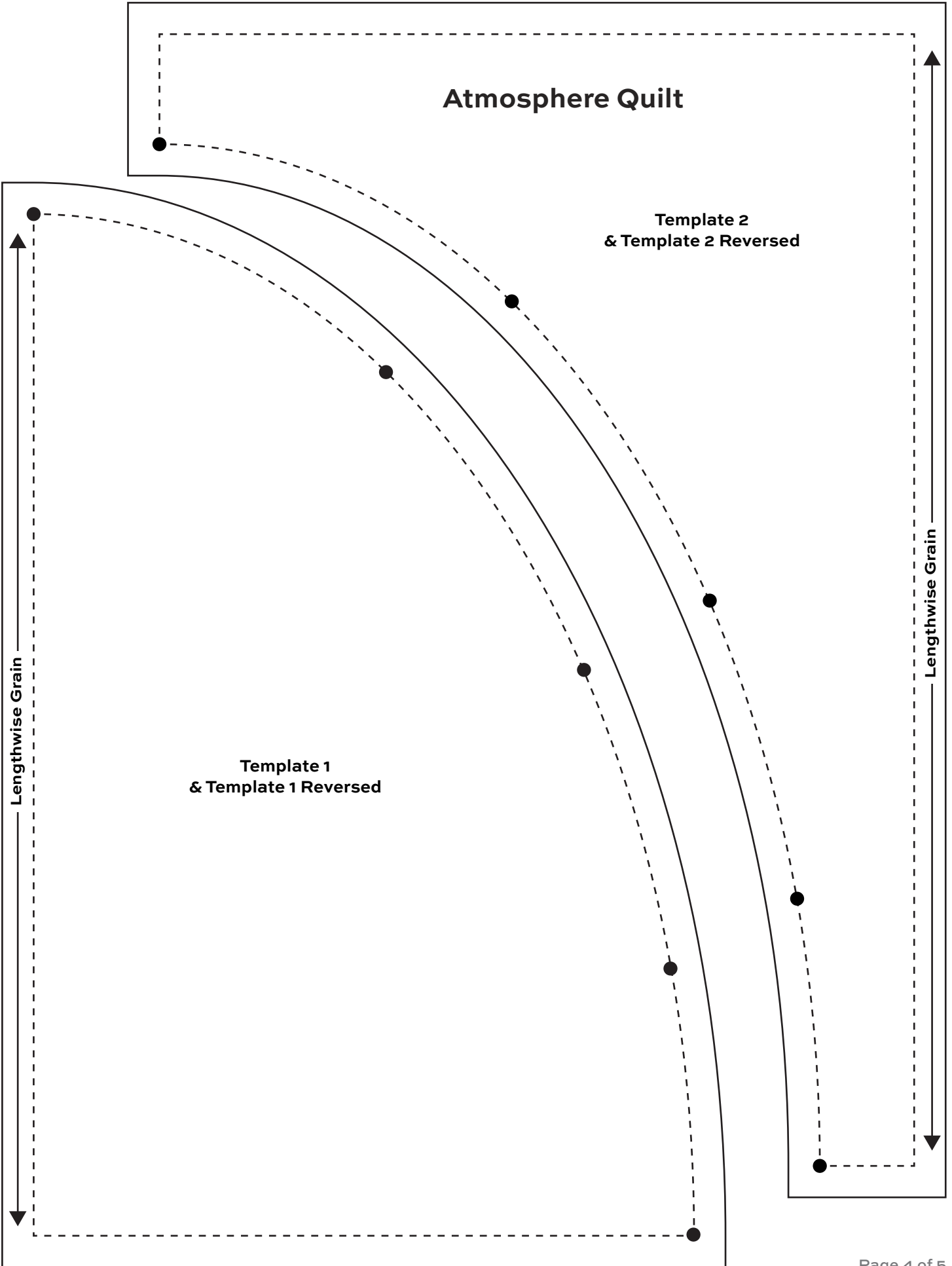
Atmosphere Quilt

Template 2
& Template 2 Reversed

Template 1
& Template 1 Reversed

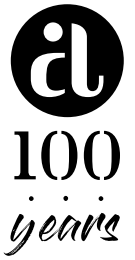
Lengthwise Grain

Lengthwise Grain

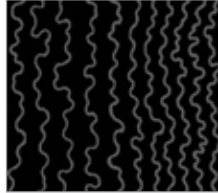


Century Black on Black and Black on White

ANDOVER FABRICS



Century Black on Black



9667 K



9668 K



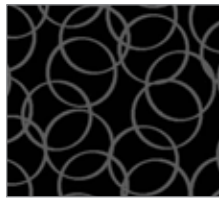
9671 K



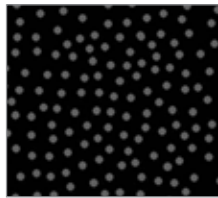
9672 K



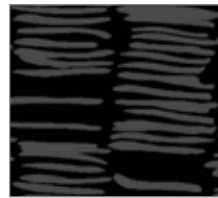
9673 K



9676 K



9677 K



9680 K



9682 K



9683 K



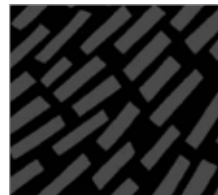
9684 K



9688 K



9691 K



9692 K

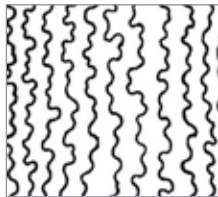


9694 K

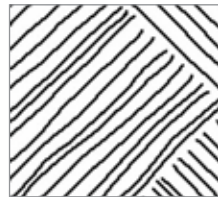


9695 K

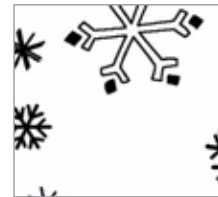
Century Black on White



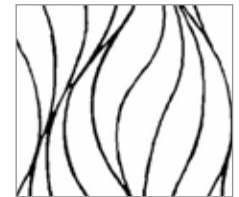
9667 L



9668 L



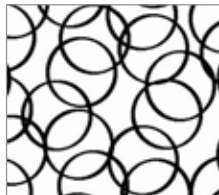
9671 L



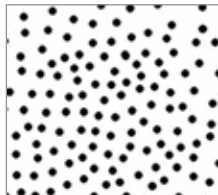
9672 L



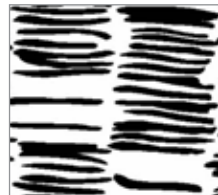
9673 L



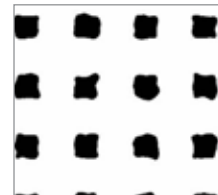
9676 L



9677 L



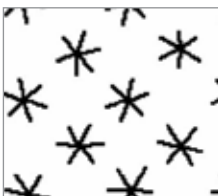
9680 L



9682 L



9683 L



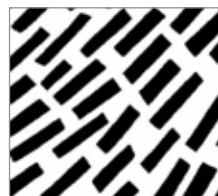
9684 L



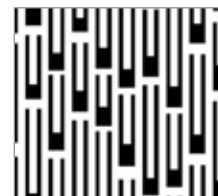
9688 L



9691 L



9692 L



9694 L



9695 L

All fabrics are used in quilt pattern. Fabrics shown are 100% of actual size.

andover  makower.uk

Free Pattern Download Available

1384 Broadway New York, NY 10018 • Tel. (800) 223-5678 • andoverfabrics.com